

MJTP SERIES 6MM & 4MM SMD TACT SWITCHES

FEATURES

- Numerous single pole-single throw momentary configurations.
- Excellent tactile feed-back (Snap dome).
- Ultra-compact size.
- Long operating life for high reliability.
- Molded-in terminals minimize wicking of flux or solder.

MATERIALS

Case: High temperature 4/6 nylon.
 Actuator: High temperature 4/6 nylon.
 Cover/Bracket: PET film, tin plated brass or stainless steel.
 Terminals: Silver plated brass.
 Shorting Contact: Phosphor bronze or stainless steel with silver plating.
 L.E.D. rating: Forward voltage- 2.1 V (3.0 V Max.). Cont. fwd. current 20mA max. @ 25°C.

Gold plating available on contacts & terminals
 - consult factory.

GENERAL SPECIFICATIONS

ELECTRICALS

Contact rating: 50 mA @ 12 VDC
 Insulation resistance: 100 megohms min. (100 VDC)
 Dielectric withstanding voltage: 250 VAC for 1 minute
 Contact resistance: 100 milliohms max. @ 5 VDC, 10 mA
 Electrical life: 100,000 cycles min. (1,000,000 cycles available - consult factory)
 Contact bounce: less than 10 msec.

MECHANICALS, THERMALS, ENVIRONMENTALS

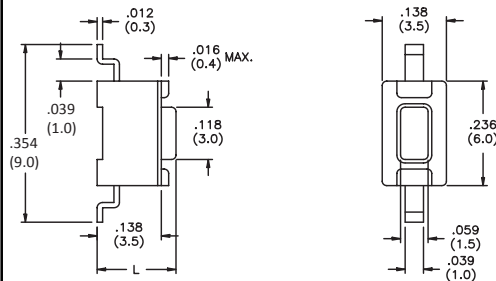
Plunger travel: .010"+ .008", - .004" (0,25 +0,2, -0,1 mm)
 Actuation force: 160 grams ±30 grams
 Operating temperature range: -20°C to +70°C
 Storage temperature range: -30°C to +80°C for 96 hours
 Shock resistance: 30G per method 213, MIL-STD-202
 Vibration resistance: passes method 201, MIL-STD-202

SOLDERING (note - non-washable except for models indicated as 'process compatible').

IR reflow soldering: 240°C max. for 20 seconds max.
 Wave soldering: 255°C max. for 5 seconds max.
 Hand soldering: 320°C max. for 3.5 seconds max. (40 watt iron max.)

SPECIFICATIONS SUBJECT TO CHANGE WITHOUT NOTICE.

US # MJTP1106S

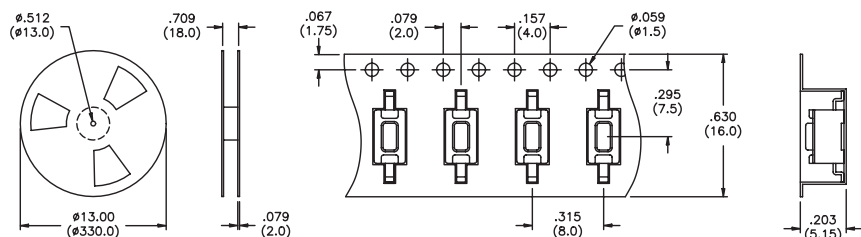


| US Model No. | Dim. L (in./mm) |
|-------------------|-----------------|
| MJTP1106S | .169 (4,3) |
| MJTP1106SA | .197 (5,0) |

Bulk packaged.

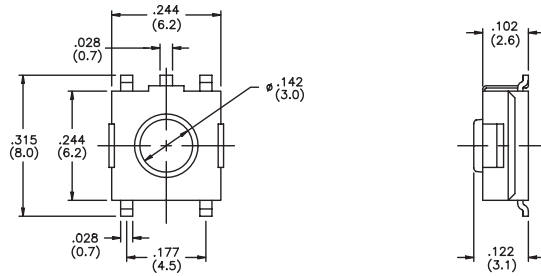
US # MJTP1106SATR

Same as above, except supplied on tape and reel as shown.



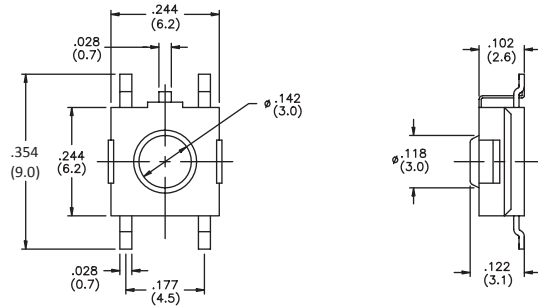
Tape & reel packaging - quantity 1800 per reel.

US # MJTP1122
Grounding



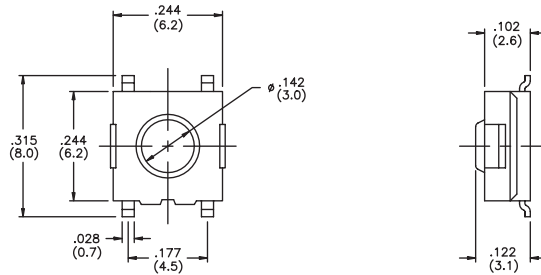
Bulk packaged.

US # MJTP1122A
Grounding



Bulk packaged.

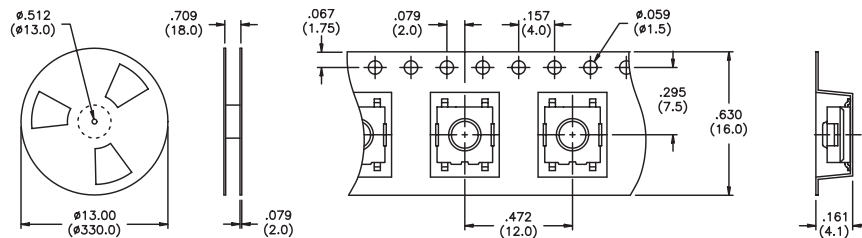
US # MJTP1122B
EU # PHAP3374



Bulk packaged.

US # MJTP1122TR,
MJTP1122BTR &
MJTP3374TR
EU # PHAP3374R

Same as above,
except supplied
on tape & reel
as shown.
Note -
MJTP1122A
not available on
tape & reel.

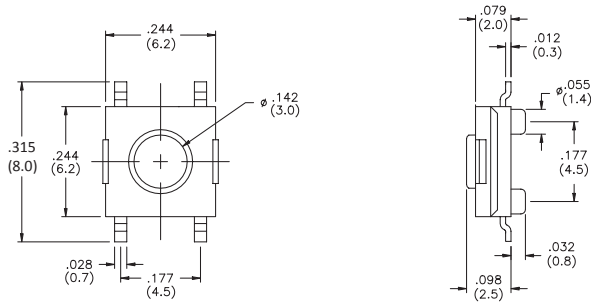


Tape & reel packaging - quantity 1500 per reel.

SPECIFICATIONS SUBJECT TO CHANGE WITHOUT NOTICE.

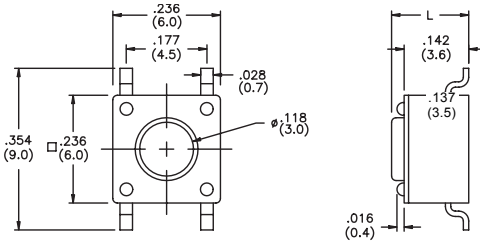
SPECIFICATIONS SUBJECT TO CHANGE WITHOUT NOTICE.

US # MJTP1125B



Bulk packaged.

**US # MJTP1138
EU # PHAP3368**



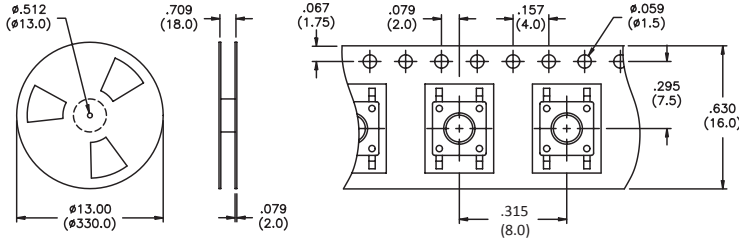
| US Model No. | Dim. L (in./mm) | EU Model No. |
|------------------|-----------------|------------------|
| MJTP1138 | .170 (4,3) | PHAP3368 |
| MJTP1138A | .197 (5,0) | PHAP3368A |
| MJTP1138B | .374 (9,5) | PHAP3368B |
| MJTP1138C | .315 (8,0) | PHAP3368C |
| MJTP1138D | .512 (13,0) | PHAP3368D |
| MJTP1138E | .287 (7,3) | PHAP3368E |
| MJTP1138F | .335 (8,5) | PHAP3368F |
| MJTP1138G | .275 (7,0) | N/A |

Bulk packaged. Tubes available for some models consult factory.

US # MJTP1138TR

Same as above except supplied on tape & reel as shown.

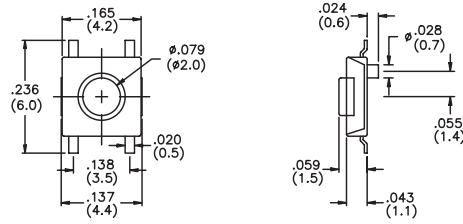
Tape & reel:
 MJTP1138ATR = 500 pcs.
 MJTP1138BTR = 500 pcs
 MJTP1138CTR = 700 pcs
 MJTP1138ETR = 750 pcs
 MJTP1138FTR = 700 pcs
 MJTP1138GTR = 750 pcs



| Part # | H |
|-----------|-------------|
| MJTP1138- | .213 (5.4) |
| MJTP1138A | .213 (5.4) |
| MJTP1138B | .394 (10.0) |
| MJTP1138C | .343 (8.7) |
| MJTP1138E | .299 (7.6) |
| MJTP1138F | .343 (8.7) |
| MJTP1138G | .299 (7.6) |

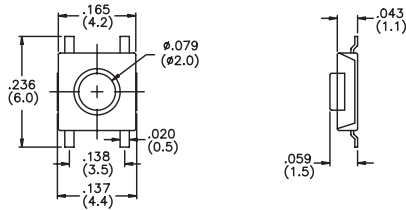
MJTP1138TR & MJTP1138ATR: Tape & reel packaging - quantity 1200 pcs

US # MJTP1140
EU # PHAP3390
 4mm x 4mm



Bulk packaged.

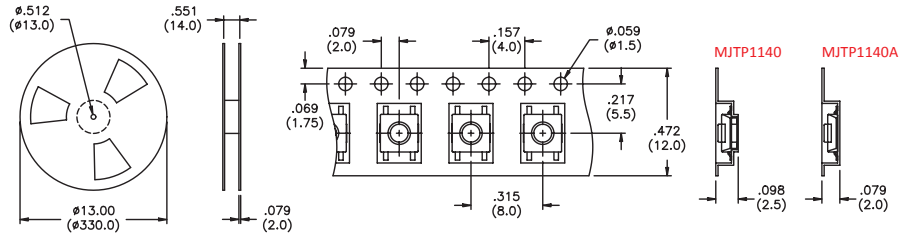
US # MJTP1140A
EU # PHAP3391



Bulk packaged.

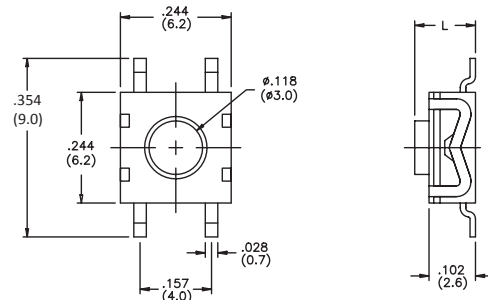
US # MJTP1140TR & MJTP1140ATR
EU # PHAP3390R & PHAP3391R

Same as above, except supplied on tape & reel as shown.



Tape & reel packaging - quantity 3400 per reel.

US # MJTP1162
EU # PHAP3371



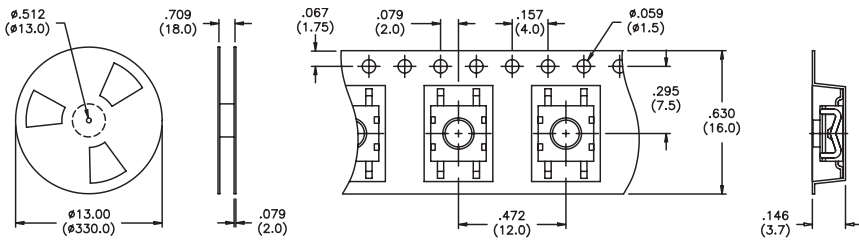
| US Model No. | Dim. L (in./mm) | EU Model No. |
|--------------|-----------------|--------------|
| MJTP1162 | .102 (2,6) | PHAP3371 |
| MJTP1162A | .134 (3,4) | PHAP3371A |

Bulk packaged.

SPECIFICATIONS SUBJECT TO CHANGE WITHOUT NOTICE.

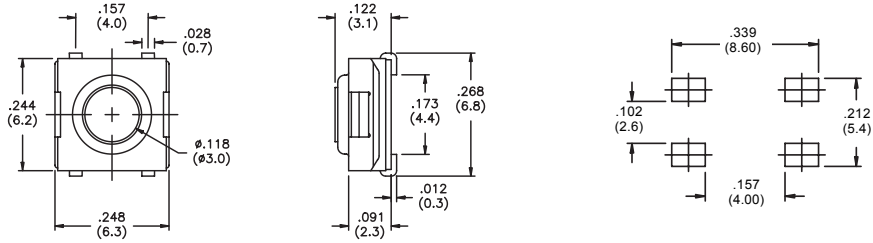
SPECIFICATIONS SUBJECT TO CHANGE WITHOUT NOTICE.

US # MJTP1162TR & MJTP1162ATR
EU # PHAP3371R & PHAP3371AR
 Same as above except supplied on tape & reel as shown.



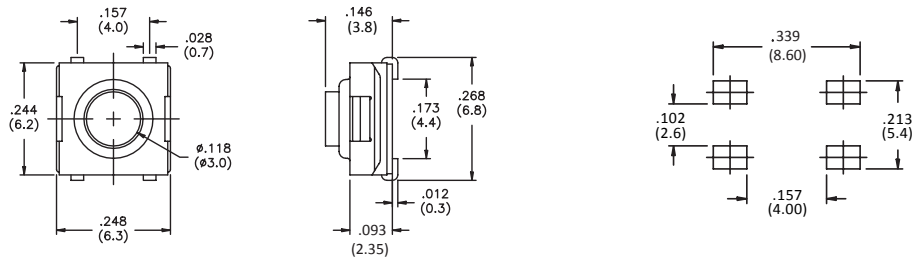
Tape & reel packaging - quantity 1600 per reel.

US # MJTPSJW66N
 Process compatible



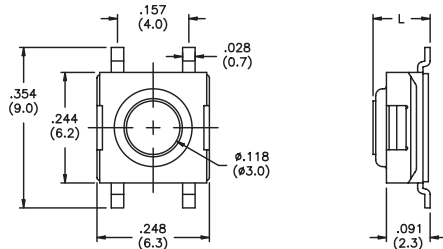
Bulk packaged.

US # MJTPSJW69N
 Process compatible



Bulk packaged.

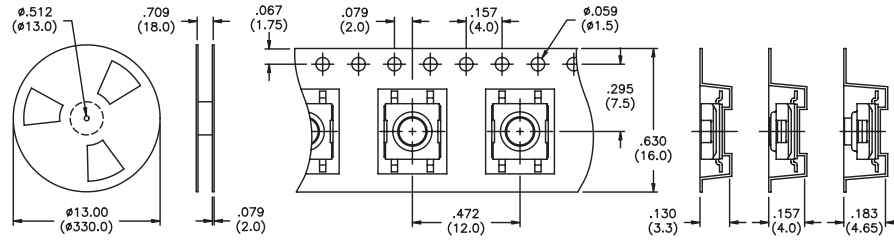
US # MJTPSMW
 Process compatible



| US Model No. | Dim. L (in./mm) |
|-----------------|-----------------|
| MJTPSMW | .122 (3,1) |
| MJTPSMWA | .091 (2,3) |
| MJTPSMWB | .146 (3,8) |

Bulk packaged.

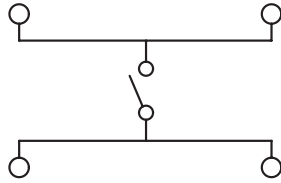
US # MJTPSMWTR & MJTPSMWATR, MJTPSMWBTR
 Same as above except supplied on tape & reel as shown.



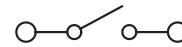
Tape & reel packaging - quantity 'MWTR' & 'MWATR' 2000 per reel, 'MWBTR' 1900 per reel.

SCHEMATICS

MJTP1122
 MJTP1125
 MJTP1137
 MJTP1138
 MJTP1140
 MJTP1162
 MJTPSJV66N
 MJTPSJV69N
 MJTPSMW

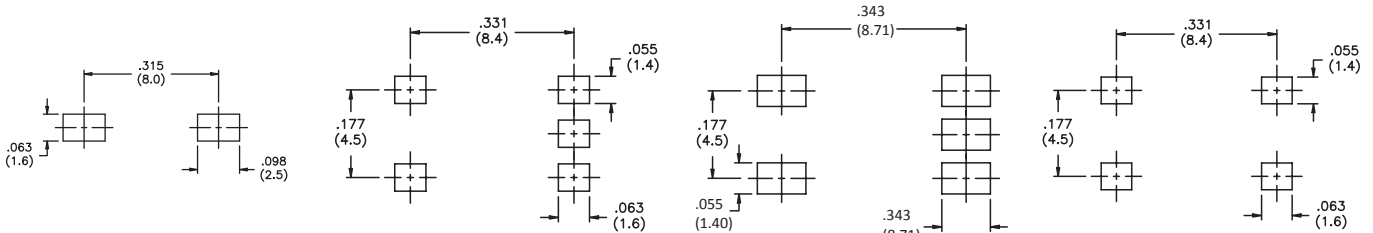


MJTP1106



PRINTED CIRCUIT BOARD LAYOUTS

Layout tolerances; Linear: $\pm .004"$ ($\pm 0,1MM$) Holes: $\pm .002"$ ($\pm 0,05MM$) Pads: $\pm .008"$ ($\pm 0,2MM$)

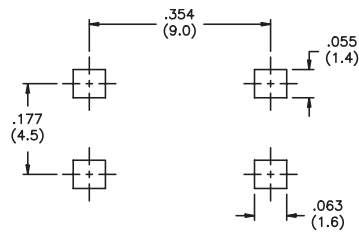


MJTP1106S

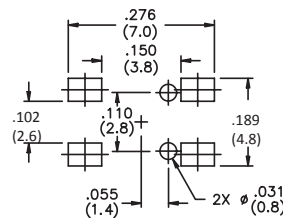
MJTP1122

MJTP1122A

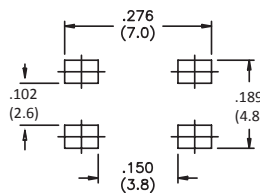
MJTP1122B



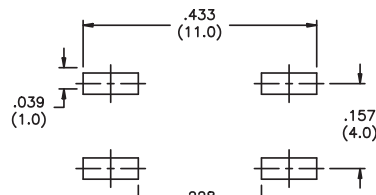
MJTP1138



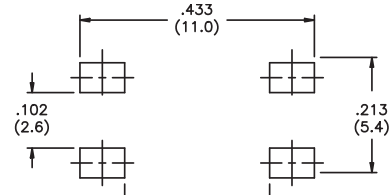
MJTP1140



MJTP1140A



MJTP1162



MJTPSMW

SPECIFICATIONS SUBJECT TO CHANGE WITHOUT NOTICE.

UC1506US